

C·PEN™

READER 3™

**Meet the new
evolution in
reading
support.**

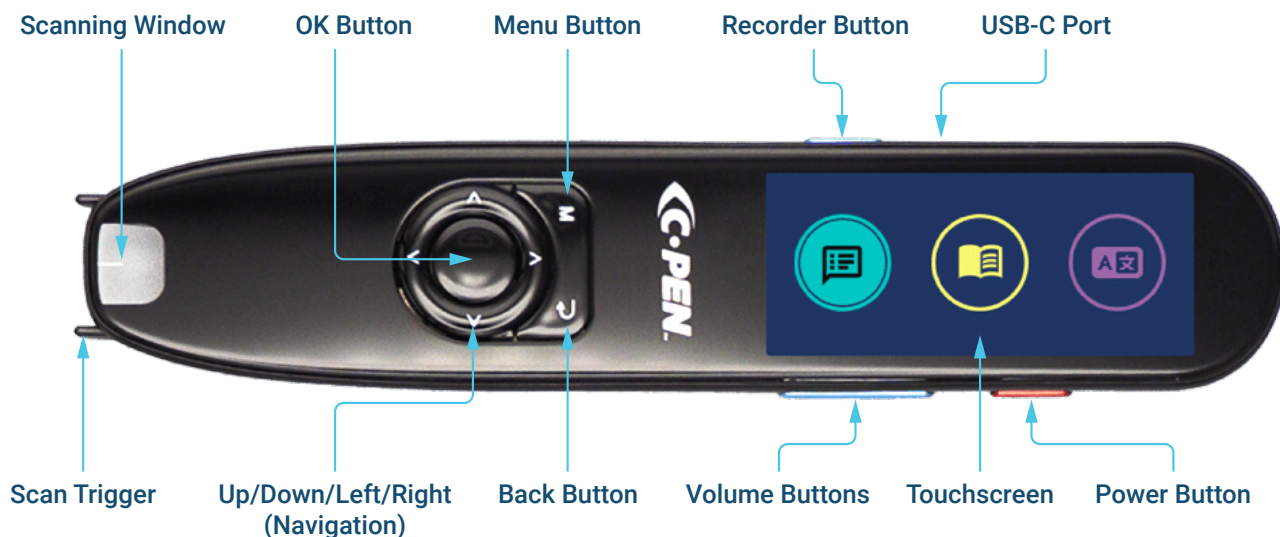


The next
generation reading
pen to empower
independent learning for all
ages.

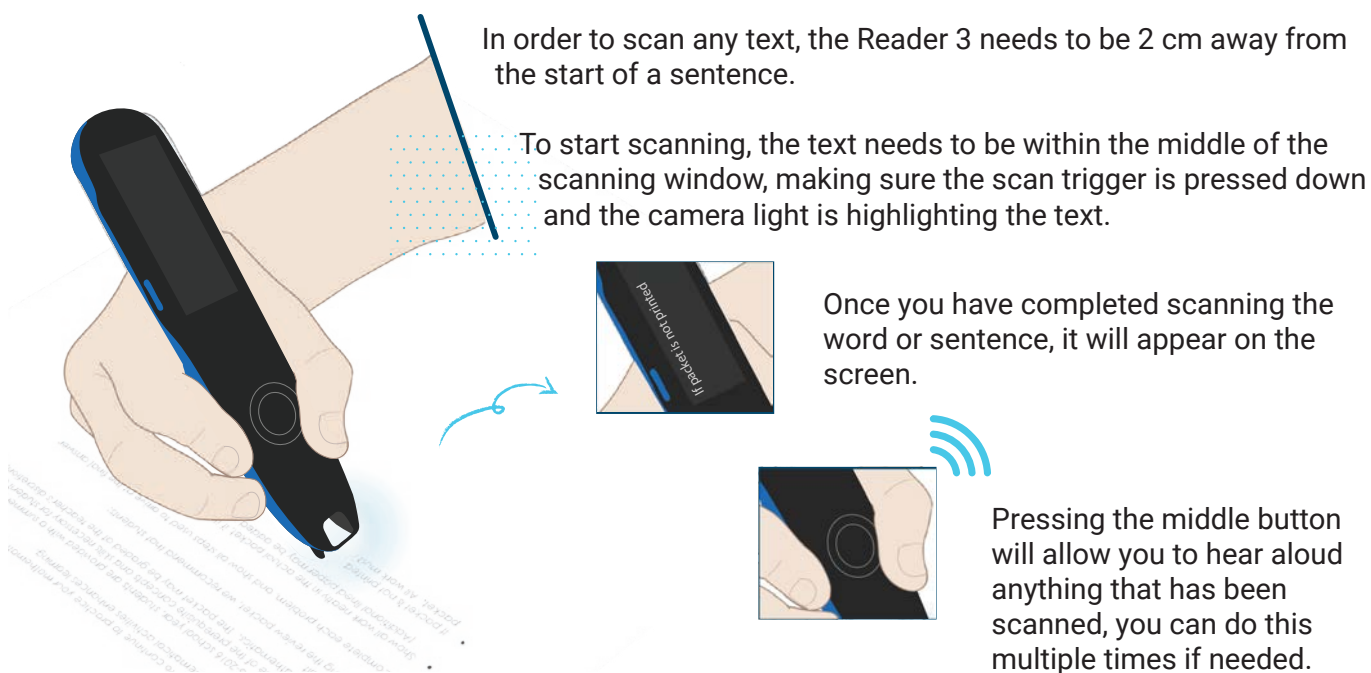
assistive technology

READER 3™

Pen Part Identification



Best Practices - How to Scan



READER 3™

Quick Start Guide

Brief Introduction

The C-Pen Reader 3 is a portable scanning pen which reads printed text out loud using an embedded camera, a real time optical character recognition (OCR) and text to speech (TTS).

C-Pen Reader 3 is designed with the objective to promote active and independent reading with the dedicated purpose to improve understanding and learning.

C-Pen Reader 3 also features mono- & bi- lingual dictionaries, translations, voice recorder, scan to file and a practise mode.

C-Pen Reader 3 will thus help you to work more efficiently and learn faster. Simply scan and the experience is instant!

Holding the C-Pen

The C-Pen needs to be held at almost a vertical angle to be able to scan documents clearly and get good results.

Have the C-Pen leaning slightly away from the text you're scanning (if you right handed, have the pen leaning to the right and vice versa if you are left handed).

Having the C-Pen at this angle will not only help you get more accurate results, but it will also make it harder for the button on the bottom of the pen to be released that starts the scanning.



Setup Wizard

Setting up your C-Pen for the first time

When you turn on the C-Pen Reader 3 for the first time, you will be presented with the Setup Wizard to configure the C-Pen.

.....

Running the Wizard after first setup

To run the Wizard again, you can access it by navigating to **Settings > Run Wizard**

.....

Settings set during the Wizard

Talking Menu - On / Off

This setting changes if the C-Pen will read back the current highlighted menu item.

Menu Language - English / French / German / Italian / Spanish

This setting sets the language being used within the menus.

Scanning Language - English / French / German / Italian / Spanish

This setting sets the language being used for the text to speech spoken by the C-Pen.

Voice - (If English is selected) British / American / Indian / Scottish / Irish / Australian

This setting sets the voice/accent of the text to speech spoken by the C-Pen.

Dictionary Language - English / French / Spanish / Italian / German

This setting sets the language being used for the Dictionary.

Dictionary - (If English is selected) OPD ENG (Oxford Primary Dictionary) / NOAD (New American Oxford Dictionary) / Collins

This setting sets the dictionary word definition source.

Translation Language - A number of options to translate between English (ENG) and Italian (ITA) / Spanish (SPA) / German (GER) / French (FRE)

This setting sets the translation language when using the translation feature.

Auto Read - On / Off

This setting sets if scanned text is read automatically or not after scanning.

Speed - 0 through 10

This setting sets the speed that the scanned text is read back.

Volume - 1 through 10 then Boost1 through Boost5

This setting sets the volume of the text to speech voice. Boost volumes are not recommended for use with headphones.

Word Pause - 0 through 5

This setting sets if there is a pause between words, 0 being none and 5 being around a 2 second pause.

Punctuation Pause - 0 through 5

This setting sets if there is a pause after a punctuation, 0 being none and 5 being around a 2 second pause.

Wi-Fi - Connect to a Wi-Fi Network

This setting allows connection to a Wi-Fi Network for online translations and over-the-air updates.

Left/Right Handed - Left-handed / Right-handed

This setting sets the orientation of the C-Pen based on left or right handedness.

Commonly Adjusted Settings

Change Voices

By changing the Text Language on the Reader 3, you can also change the voice. This can be done from **Settings > Text Language** and tapping left and right on the highlighted language.

This can also be accessed when in **Reader** by pressing the **Menu** button or tapping on the ... and scrolling down to or tapping on **Text Language**.

For example English provides the options for British, American, Indian, Scottish, Irish and Australian voices.

Auto-Read Setting

When Auto-Read is enabled, the C-Pen automatically reads each scanned line - ideal for beginners scanning one-line sentences. For scanning multiple lines, it's recommended to turn Auto-Read off. Scan all desired text, use the arrow keys to go to the start, and press OK to listen.

While in **Reader** you can toggle Auto-Read on/off by pressing the **Menu** button or tapping on the ... then scrolling down to or tapping on **Auto-Read**. If using the physical buttons press left to turn it on and right to turn it off when **Auto-Read** is highlighted.

Punctuation Delay

Punctuation Delay adds a pause after punctuation marks. This setting has a range that can be set to make the pause shorter or longer.

To adjust the delay, navigate to **Settings > Read settings**, scrolling down to **Punctuation Pause** and then using the left and right to set the length of the pause

This setting can also be accessed while in **Reader** or **Dictionary** by pressing the **Menu** button or tapping on the ... then scrolling down and selecting **Read settings** and then scrolling down to **Punctuation Pause**.

Left / Right Handed Mode

The C-Pen Reader 3 can be set to be used left handed or right handed. This will rotate the screen to be the correct way around for the hand it is being held in.

To change this setting, navigate to **Settings > Left/Right Handed**, and press left or right to flip between the **L** (Left Handed) and **R** (Right Handed) options.

Please note that the Reader 3 may reboot when changing this setting.

Headphone Options and Settings

Bluetooth Headphones

Bluetooth can be turned on in **Settings > Bluetooth**.

To add Bluetooth headphones to the C-Pen, first make sure your headphones are in pairing mode (you may need to look up your headphone user manual for details on how to put them into pairing mode). Then from the **Settings > Bluetooth** menu select **Add Device**. The C-Pen will start looking for Bluetooth devices. Once your headphones are found, select them on the C-Pen and they will pair.

Your Bluetooth Headphones should automatically connect again next time both the C-Pen and Headphones are turned on.

If the Bluetooth on the C-Pen is turned Off and On again, you will need to connect your headphones again within **Settings > Bluetooth**.

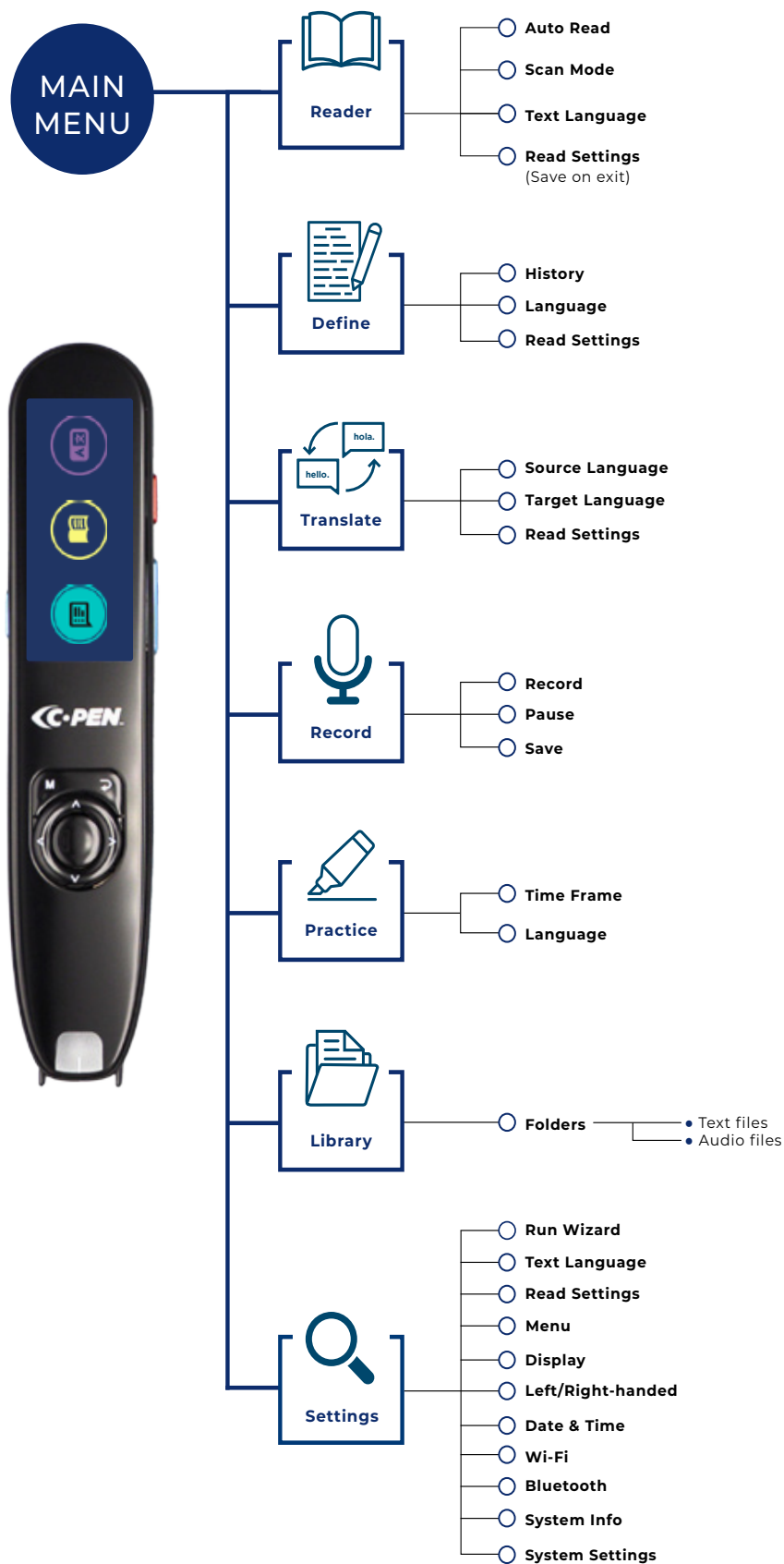
USB-C Headphones

The Reader 3 supports USB-C headphones or the use of standard 3.5mm headphones via a USB-C to 3.5mm adapter (*sold separately*) for audio playback.

Simply plug your USB-C headphones or USB-C adapter with 3.5mm headphones into the USB-C port.

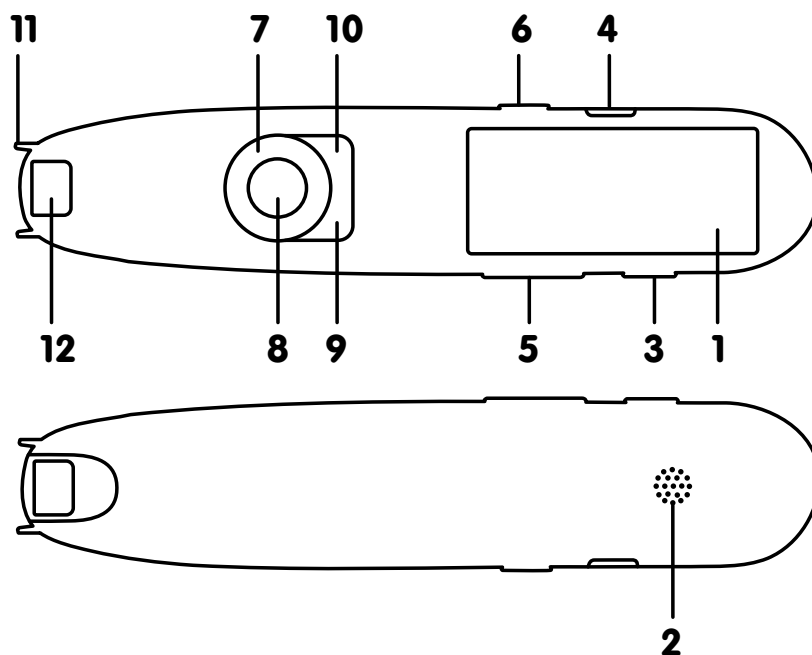
READER 3™

Menu Guide



READER 3™

Device Overview



1. **Touchscreen:** The device's display is a touchscreen that you can use to navigate the features of the Reader 3.
2. **Speaker:** Used when text is read out loud. Muted when headphones are connected.
3. **Power button:** Press and hold to power on. To power off, press and hold while on until a prompt appears and select yes by tapping the screen or using the navigation buttons.
4. **USB-C Port:** Used for charging and for USB-C headphones. To charge, connect to USB charger or computer USB port. Or connect USB-C headphones.
5. **Volume buttons:** + and - volume buttons to adjust audio output.
6. **Voice Memo:** Dedicated voice memo button.
7. **4-way Navigation buttons:** Press buttons to move focus up, down, left, right.
8. **OK button:** Press this button to select highlighted options. The OK button is also used to re-read text out loud in Reader mode.
9. **Return button:** Used as a quick back button to help with menu navigation.
10. **Menu button:** Press this button to display context menu.
11. **Scan Trigger:** Is automatically activated when the pen is in contact with the paper to trigger scanning.
12. **Scanning Window:** Frames the text to be scanned.

Sample Text

Use the following text to try out the Reader 2:

Harry Potter was snoring loudly. He had been sitting in a chair beside his bedroom window for the best part of four hours, staring out at the darkening street, and had finally fallen asleep with one side of his face pressed against the cold windowpane, his glasses askew and his mouth wide open. The misty fog his breath had left on the window sparkled in the orange glare of the streetlamp outside, and the artificial light drained his face of all colour so that he looked ghostly beneath his shock of untidy black hair.

The room was strewn with various possessions and a good smattering of rubbish. Owl feathers, apple cores, sweet wrappers littered the floor, a number of spell books lay higgledy-piggledy among the tangled robes on his bed, and a mess of newspapers sat in a puddle of light on his desk...

Continued with OpenDyslexic Font:

Though he already knew it by heart, Harry had been stealing glances at this missive every few minutes since seven o'clock that evening, when he had first taken up his position beside his bedroom windows, which had a reasonable view of both ends of Privet Drive. He knew it was pointless to keep reading Dumbledore's words; Harry had sent back his "yes" with delivering owl, as requested, and all he could do now was wait; either Dumbledore was going to come, or he was not.

*Passage from **Harry Potter and the Half-Blood Prince** (Chapter 3 - Will and Won't) by J.K. Rowling.*

Sample Text

Try out different font sizes - minimum to maximum size:

7 pt

Somewhere inside all of us is the power to change the world.

8 pt

Somewhere inside all of us is the power to change the world.

10 pt

Somewhere inside all of us is the power to change the world.

12 pt

Somewhere inside all of us is the power to change the world.

14 pt

Somewhere inside all of us is the power to change the world.

18 pt

Somewhere inside all of us is the power to change the world.

20 pt

Somewhere inside all of us is the power to change the world.

22 pt

Somewhere inside all of us is the power to change the world.

*Quote from **Matilda** by Roald Dahl*



READER 3™